

Barco service bulletin

Serial Number : 1630
Date : 2024-03-07
Product : ICMP/ICMP-X
Priority Code* : D

- A. "Must" modification, Barco will provide the necessary components to perform this modification at no charge.
- B. Improves the reliability of the product.
- C. Improves the general working conditions of the product.
- D. For information only.

SSD drives replacing HDD in ICMP(-X)

General

Situation

Solid-state drives (SSD's) have become the norm for most applications and markets, replacing hard disk drives (HDD's) that had been in use for decades previously.

Cause

Market evolution, as well as technological evolution in storage solutions, make SSD technology superseding HDD technology.

Solution

Consequently, from march 2024, Barco will progressively supply ICMP (-X) with SSD's as standard storage solution.

For first generation ICMP models (equipped with a GEN1 storage controller), HDD's remain the only choice (see below for more information). Service of HDD's is maintained for impacted ICMP models.



This change of storage technology has no impact on ICMP(-X) performances.

Use the ICMP(-X) overview provided in the next chapters to:

1. identify your device.
2. define the replacement of your storage in case of failure.



References provided in this document are subject to change. Please contact Barco service to obtain the most recent list of Barco service parts.

Devices overview

ICMP with DisplayPort and HDMI 1.4

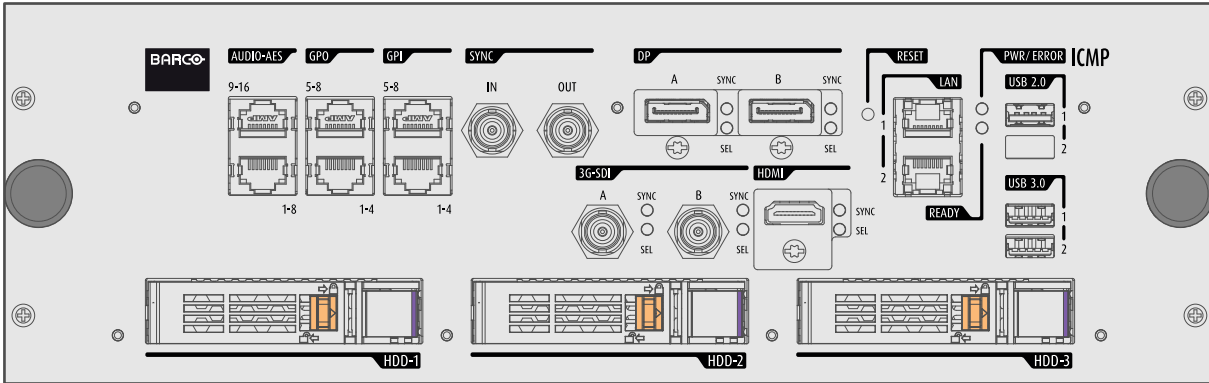


Image –1 Front face ICMP (with 2x DisplayPorts and 1x HDMI 1.4). Video mezzanine (3G-SDI and HDMI 1.4 connectors) is optional.

Model	Part numbers	RAID controller	Replacement solution
ICMP (HDMI 1.4)	R9801135, R7681061 (R)K, R9801136, R7681133 (R)K	GEN1 RAID controller	HDD's

Note: It is not possible to upgrade this device from GEN1 RAID controller to GEN2 RAID controller.

ICMP with HDMI 2.0

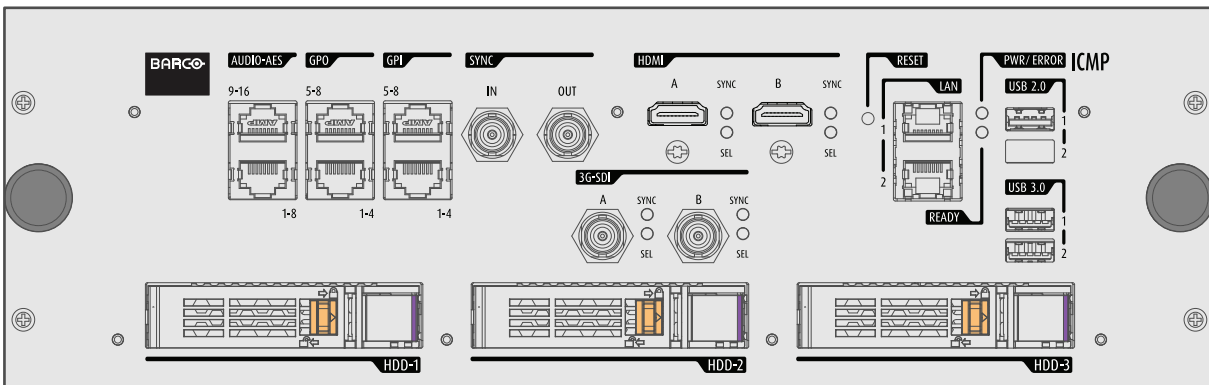


Image –2 Front face ICMP (with 2x HDMI 2.0 as video source). Video mezzanine (3G-SDI connectors) is optional.

Model	Part numbers	RAID controller	Replacement solution
ICMP (HDMI 2.0)	R9801641, R7681271 (R)K, R9801640, R7681270 (R)K	GEN1 RAID controller	SSD STARTER KIT 1TB or 2TB (GEN2 RAID controller + 3x SSD KIT)
ICMP (HDMI 2.0)	R9801641, R7681271 (R)K, R9801640, R7681270 (R)K	GEN2 RAID controller	SSD's

ICMP-X

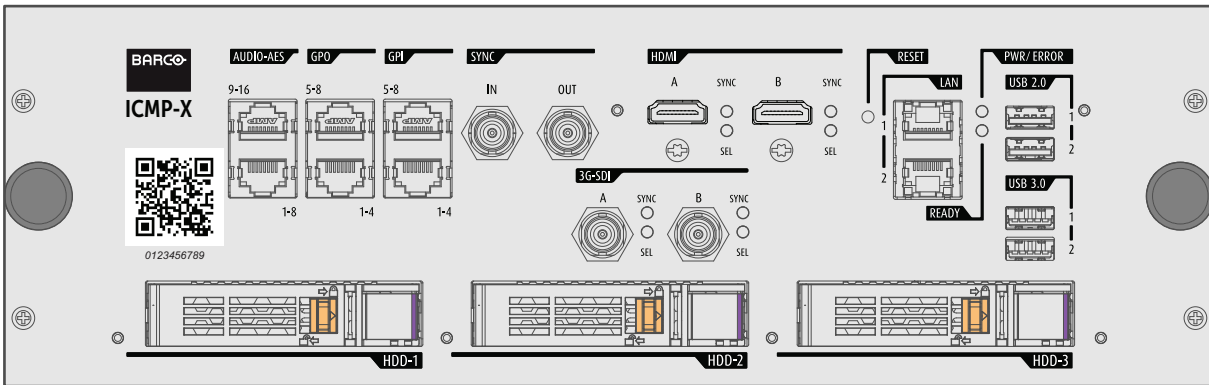


Image –3 Front face ICMP-X . Video mezzanine (3G-SDI connectors) is optional.

Model	Part numbers	RAID controller	Replacement solution
ICMP-X	R9801843, R7681362 (R)K, R9801842, R7681363 (R)K	GEN2 RAID controller	SSD's

Storage device models validated by BARCO

Storage device models validated by Barco

Only the original spare parts provided by Barco or models validated by Barco (see list below) can be used in the ICMP. All deviations from this rule void warranty.

Disk models	Barco references	Service availability	ICMP-X	ICMP with HDMI 2.0	ICMP with DisplayPort and HDMI 1.4
1x 1TB HDD	R9801134 or R98011341	Service only, for ICMP with DisplayPort and HDMI 1.4	Replacement with SSD technology is recommended	Replacement with SSD technology and GEN2 RAID controller (if applicable) is recommended ¹	Yes
3x 1TB HDD	R9801143	Not available for service	Replacement with SSD technology is recommended	Replacement with SSD technology and GEN2 RAID controller (if applicable) is recommended ¹	Yes
1x 2TB HDD	R9801141	Service only, for ICMP with DisplayPort and HDMI 1.4	Replacement with SSD technology is recommended	Replacement with SSD technology and GEN2 RAID controller (if applicable) is recommended ¹	Yes
3x 2TB HDD	R9801142	Not available for service	Replacement with SSD technology is recommended	Replacement with SSD technology and GEN2 RAID controller (if applicable) is recommended ¹	Yes
1x 1TB SSD	R9803100	Service only	Yes	Yes, only if GEN2 storage controller is present	No
3x 1TB SSD	R9803101	Not available for service	Yes	Yes, only if GEN2 storage controller is present	No

1. SSD STARTER KIT 1TB or 2TB (GEN2 RAID controller + 3x SSD). For more info about the SSD starter kit and instruction see Barco website

Disk models	Barco references	Service availability	ICMP-X	ICMP with HDMI 2.0	ICMP with DisplayPort and HDMI 1.4
1x 2TB SSD	R9803102	Service only	Yes	Yes, only if GEN2 storage controller is present	No
3x 2TB SSD	R9803103	Not available for service	Yes	Yes, only if GEN2 storage controller is present	No

Storage controllers

Storage controller GEN1 and GEN2

The ICMP-X is equipped with a GEN2 storage controller while ICMP has a GEN1 storage controller.

The GEN1 Storage controller only supports HDD's

The GEN2 storage controller supports SSD's and HDD's but uses another disk initialization type. This implies that HDD's initialized for the legacy ICMP (with GEN1 storage controller) are not interchangeable with the ICMP-X without re-initialization. Note that a re-initialization process results in loss of content. See ICMP(-X) installation manual for more details.

It is possible to upgrade an ICMP HDMI 2.0 with a GEN2 storage controller. For more info about the upgrade kit and instructions see Barco website.

Storage overview

Storage technologies

Perfectly identifying the type of disk is very important as some use cases are not supported.

Mixing HDD's with SSD's is not supported.

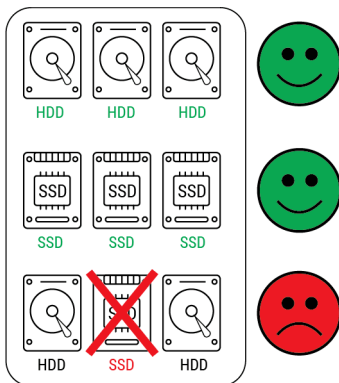


Image -4

Storage models

Mixing HDD (or SSD) brands/models is not supported.

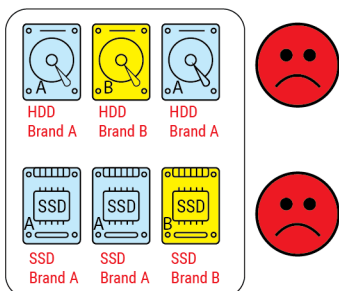


Image -5 set with different brand

Storage capacity

Make sure that all storage devices in the ICMP(-X) have the same storage capacity. Mixing capacities of HDD's or SSD's is not recommended.

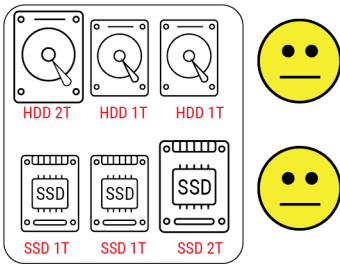


Image -6

Mixing storage capacities will result in taking the smallest device capacity available as reference for the RAID creation. For example, if a 2TB HDD is used with two other 1TB HDD's, the final RAID capacity will be 2TB.

Material storage period

The maximum recommended storage period in the original packaging is 90 days. This value drops to 30 days if the device is removed from its original packaging.



During any storage period the drive non-operational temperature, humidity, wet bulb, atmospheric conditions, shock, vibration, magnetic and electrical field specifications should be followed.



Drives should be stored in the original unopened shipping packaging whenever possible.

Approvals

Modification approved by:

Service Escalation
Manager

R&D Director

Product Manager

Quality Manager

If you should have any more questions, or remarks, please do not hesitate to contact our technical support team via the following web site www.Barco.com/esupport.